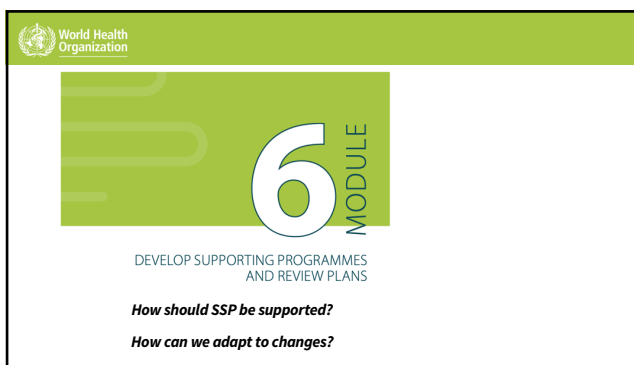
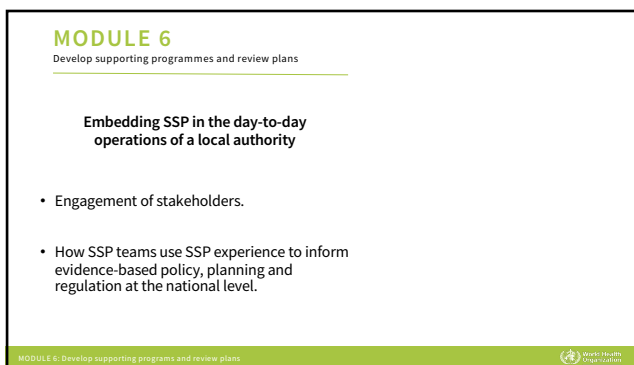




1




2




3

Identify and implement supporting programmes


Periodically review and update the SSP outputs



MODULE 6: Develop supporting programs and review plans 


4

STEP 6.1
Identify and implement supporting programmes



OBJECTIVE
To ensure that SSP implementation is supported with sustainable sanitation enterprises, research programs, and evidence-based engagement in national-level policy and planning.


- Activities and partnerships that enable the implementation of the incremental improvements identified.
- They differ from control measures in that they do not directly control hazardous events.
- They support the adaptation, development and take-up of control measures selected in Module 4.

MODULE 6: Develop supporting programs and review plans 

5

STEP 6.1
Identify and implement supporting programmes


- **Sanitation service provider support.**
- **Use of SSP results as evidence to revise national policies, plans and regulations.**
- **Research programmes** to support key knowledge or evidence gaps.

MODULE 6: Develop supporting programs and review plans 

6


STEP 6.2
Periodically review and update the SSP outputs

OBJECTIVE

 To review and update the sanitation safety plan.


SSP should be reviewed and revised in different occasions:


- Regular SSP team meetings
- Planned and periodic review meetings
- Meetings to discuss an incident or near-miss

MODULE 6: Develop supporting programs and review plans 

7

STEP 6.2
Periodically review and update the SSP outputs

 Remember:
Sanitation Safety Planning is not linear!
It's a continuous process!


MODULE 6: Develop supporting programs and review plans 

8

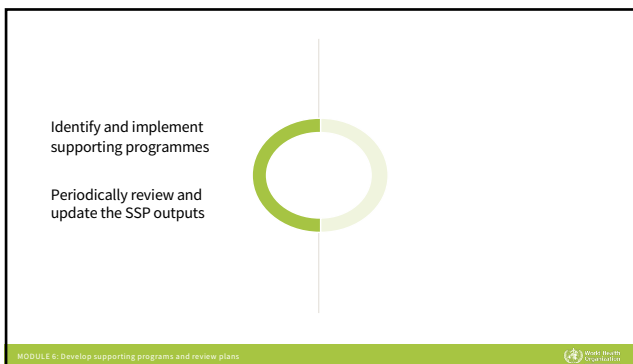
STEP 6.2
Periodically review and update the SSP outputs

The reviews will take into account:

- Improvements that have been made
- Changes in operating conditions
- Any new evidence or data

MODULE 6: Develop supporting programs and review plans 

9



10



11



12
